



PUBLIC INFORMATION MEETING

Southern Blvd.

Reconstruction

Golf Course Road to NM 528

PW1625 (CN A301041)

August 23, 2018





Meeting Topics

- Introductions
- Project Overview
- Construction Schedule / Phasing
- Construction Information
- How to Stay Informed
- Open House (Staff Available to Answer Questions)

INTRODUCTIONS: Project Team

Agencies:

- City of Rio Rancho
- New Mexico Department of Transportation
- Federal Highway Administration
- Sandoval County

Design/Construction Phase Services:

- Wilson & Company

Contractor:

- Albuquerque Asphalt





INTRODUCTIONS

City of Rio Rancho

- Mayor Hull
- Councilors
- Keith Riesberg, City Manager
- Kelly Heath, Project Manager
- BJ Gottlieb, City Engineer / Interim Public Works Director
- Jamie Marrufo, Capital Improvements Section Manager

Wilson & Company

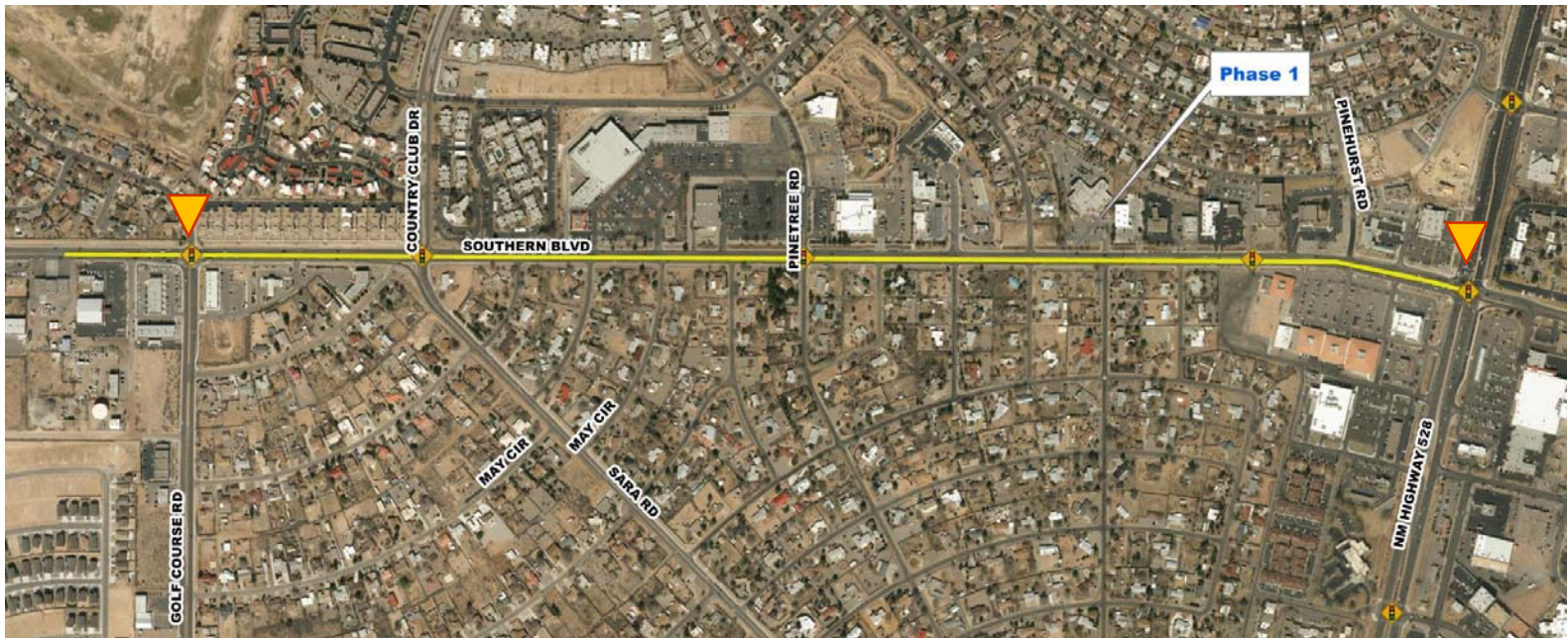
- Savina Garcia, Project Engineer

Albuquerque Asphalt

- Dan Fisher, Project Manager



PROJECT OVERVIEW: Project Limits



PROJECT OVERVIEW: Improvements

- Roadway Reconstruction
- Intersection Improvements
- Access Management
- Sidewalk and Multi-use Trail Improvements
- Traffic Signals & ITS
- Roadway Lighting
- Drainage Infrastructure
- Utility Modifications
- Signing & Striping
- Landscaping



PROJECT OVERVIEW: Typical Section



- 15' Raised Median
- 4 Driving Lanes
- 2 Bike Lanes
- 6' Sidewalk
- 12' Trail



PROJECT OVERVIEW: Funding

- Actual Construction Cost = \$14,633,641
- Funding Sources
 - Federal Funding = \$ 9,516,946
 - City Funding = \$ 4,085,935
 - State Funding = \$ 680,760
 - County Funding = \$ 350,000

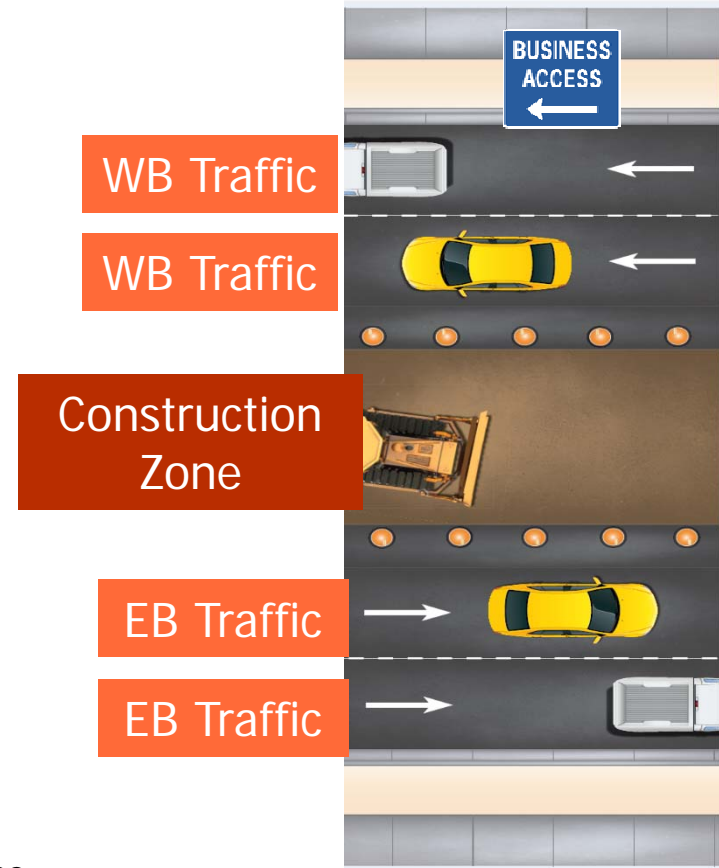
CONSTRUCTION SCHEDULE



- Construction based on a 365 calendar day schedule
 - This schedule may vary depending on things like the weather and unanticipated underground utilities.
 - Delays will be managed as efficiently as possible
- **September 2018 – September 2019**
- Changes to schedule will be updated on the project website:
www.rrnm.gov/southern

Phase 1: DETOUR CONSTRUCTION

- Sept 2018 – Oct 2018
- Traffic Split
- Maintain accesses to businesses
- Sidewalk closures and pedestrian detours – Follow posted signage for access
- Primary Activities:
 - MEDIAN REMOVAL
 - DETOUR MEDIAN PAVING
 - TEMPORARY SIGNALIZATION
 - TRAFFIC SWAP – To Utilize Eastbound lanes and Median



Phase 2: BUILD NORTH SIDE

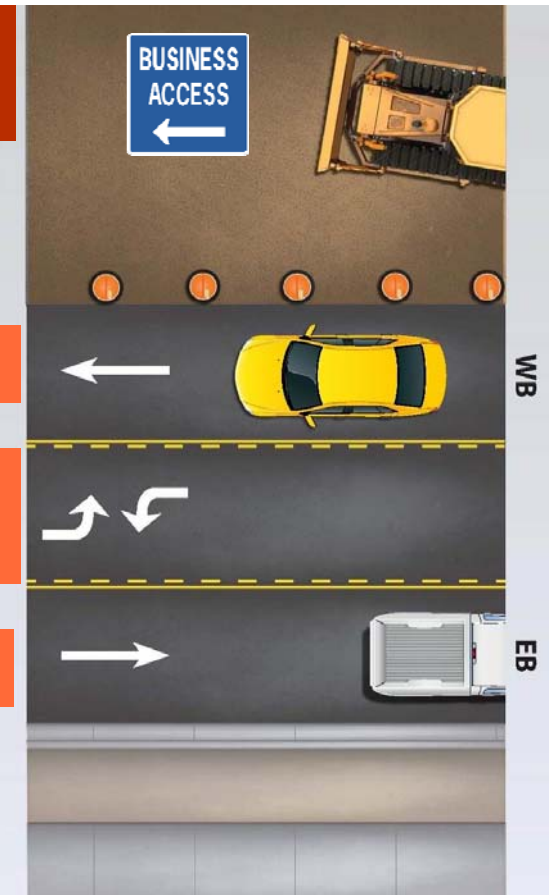
- Oct 2018 – March 2019
- Maintain accesses to businesses
 - At least 1 driveway will be open to business at all times
 - The contractor will work closely with business owners and residents to address concerns about access
- Sidewalk closures and pedestrian detours – Follow posted signage for access
- Trenching for storm drain and line installation
- Primary Activities:
 - STORM DRAIN INSTALLATION
 - WATER LINE INSTALLATION
 - SEWER SERVICE CONNECTIONS
 - SIDEWALK, LIGHTING, ITS CONSTRUCTION
 - FUTURE WESTBOUND LANES CONSTRUCTION

Construction Zone

WB Traffic

Continuous Left Turn

EB Traffic



Phase 3: BUILD SOUTH SIDE

- March 2019 – August 2019
- Maintain accesses to businesses - At least 1 driveway will be open to business at all times
The contractor will work closely with business owners and residents to address concerns about access
- Sidewalk and Multi-use Trail Closures and Pedestrian Detours –
Follow posted signage for access
- Trenching for water line installation
- Limited access to south side residential traffic
- Primary Activities:
 - WATER LINE & SEWER INSTALLATION
 - MULTI-USE TRAIL CONSTRUCTION
 - FUTURE EASTBOUND LANES CONSTRUCTION

WB Traffic

Continuous
Left Turn

EB Traffic

Construction
Zone



Phase 4: BUILD MEDIAN

- August 2019 – September 2019
- Traffic split
- Maintain accesses to businesses – Restricted Left Turn Lanes at Times
- Primary Activities:
 - MEDIAN CONSTRUCTION
 - LANDSCAPING
 - SIGNING AND STRIPING

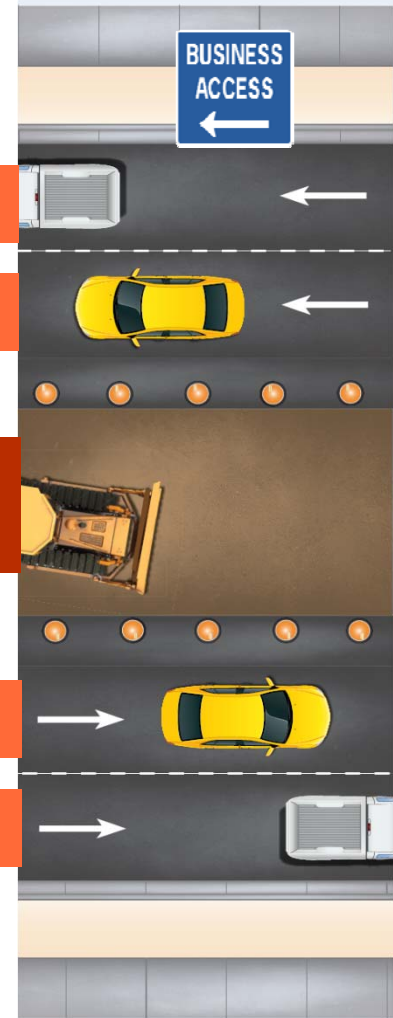
WB Traffic

WB Traffic

Construction Zone

EB Traffic

EB Traffic





Phase 5: FINAL STRIPING / SUBSTANTIAL COMPLETION

- September 2019
- PRIMARY ACTIVITIES:
 - PERMANANT STRIPING
 - SUBSTANTIAL COMPLETION INSPECTION
 - COMPLETION OF PUNCH LIST

Construction Information

- Work Hours
 - Mondays through Fridays, some Weekend Work is Expected.
 - 7:00 AM to 5:00 PM
 - Some Night work
 - Access businesses
 - Potential utility shut-offs - Affected businesses/residents will be notified in advance of any utility shut-offs



Construction Information

- Pedestrian and bicycle detours – *Detours will be provided when access to pedestrian/bicycle paths are affected by construction activities*
- Temporary bus stops – *Signage will be placed at locations designated for temp. bus stops*
- School bus routes
- Emergency Services
 - Coordination with Fire, Police and Dispatch
- Specific Business Needs
 - Business Signage
 - Maintenance of Access
- Specific Residential Needs
 - Maintenance of Access



Construction Information

- Adjacent Major-Road Impacts
 - NM 528
 - Sara Road / Country Club Drive
 - Golf Course Blvd
 - Various adjacent alternate routes
- Signal Timing adjustments
- Shop on Southern (S.O.S)



CONSTRUCTION SAFETY

- TIP #1 → Obey Signs
- TIP #2 → Slow down
- TIP #3 → Expect the Unexpected
- TIP #4 → Stay alert
- TIP #5 → Share the Road
- TIP #6 → Be Patient
- TIP #7 → Plan for extra travel time
- TIP #8 → Use Detours



HOW TO STAY INFORMED

Website

www.rrnm.gov/southern

Social Media

Facebook: @RioRanchoGov



Twitter: @RioRanchoNM



Email

Kelly Heath, City Project Manager
kheath@rrnm.gov

Phone

Kelly Heath, City Project Manager
505-896-8242

24-hour construction hotline
Jacky Spencer 505-991-0211
Heriberto Pena 505-991-2660

Sign-up for Stakeholder Emails

